



Rockwall County Planning Consortium Report

June 2016

PROJECT STATUS UPDATES

- Erby Campbell/IH 30 Interchange
- FM 551/IH 30 Interchange
- FM 3549/IH 30 Interchange
- FM 3549
- FM 740 South
- FM 552
- SH 276
- IH 30 Ramp Reversal
- Recent RTC Actions
- SH 66 Interim
- SH 66 Ultimate
- FM 549
- SH 66/Dalrock, Rowlett
- SH 205
- IH 30 Corridor Study

Erby Campbell Interchange

CSJ:	0009-12-074 (design & construction); 0009-12-077 (ROW)	Schematic Approval:	September 12, 2011
Limits:	Erby Campbell at IH 30	IAJ Approval:	September 6, 2011
Estimated construction cost:	\$19,988,909	FHWA-CE Approval	October 4, 2011
Project Description:	The development and construction of an interchange at IH 30 and Erby Campbell Road	100% Plans to Austin:	September 2011
		ROW Acquisition Complete:	March 2013
Commissioner:	David Magness, Precinct 4	Utility Relocations Complete:	October 2013
Consultant:	Atkins	Project Let Date:	January 2012
Contractor:	Webber, LLC	Construction Began:	May 2013
TxDOT Contact:	Brenda Callaway, Juan Paredes	Construction Completion:	August 2016

Current Activity:

- **Construction:** The contract was awarded to Webber, LLC at \$19,988,909. There are approximately 503 working days and 24 months of barricades. A 6-month time delay was included in the construction documents for acquisition of ROW and utility adjustments.
- See attached construction report.
- Erby Campbell is open to traffic under IH 30. Cracks and settling were noticed in the embankment behind the northeast retaining wall of IH 30. This retaining wall will be rebuilt.

TxDOT Monthly Project Report for the Rockwall Consortium

Date of report: June 21, 2016

Report prepared by: Juan A. Paredes, P.E.

Project: **IM 0301 (058)**

CSJ: **0009-12-074**

Highway: **IH 30**

Limits: **At Erby Campbell Blvd.**

Contractor: **Webber, LLC**

TxDOT Project Engineer: Juan A. Paredes, P.E.

TxDOT Project Manager: Kerry Lively

Phone: (972) 962-3617

Contractor's Superintendent: Jason Eiland

Date Work Began: May 20, 2013

Anticipated Completion Date: August 2016

Current (June) activities: Completed repair and reconstruction of MSE wall 3. Placed coping for the MSE wall 3. Continue placing embankment westbound main lane east of Erby Campbell. Place lime treated subgrade and hotmix for the future westbound main lane east of Erby Campbell. Continue grading slopes for top soil, placing sod, and seeding. Constructing curb and gutter on the westbound frontage road east of Erby Campbell. Continue working on preliminary punch list items.

Narrative description of last month's (May) activities: Continued repair and reconstruction of MSE wall 3 (northeast corner). Continued placing embankment westbound main lane east of Erby Campbell. Continued grading slopes for top soil, placing sod, and seeding. Completed installing small signs and large signs on the project. Completed installing illumination throughout the project. Continued working on preliminary punch list items.

Narrative description of activities planned for next month (July): Concrete paving of the westbound main lane east of Erby Campbell. Complete construction of sound wall on the eastbound main lane ramp. Work on the westbound frontage road east of Erby Campbell. Finish grading slopes for top soil, placing sod, and seeding. Continue working on preliminary punch list items.

Traffic issues: N/A

Plans for changes in traffic patterns: Place westbound main lane in final configuration around the end of July, depending on weather.

Item(s) of work currently controlling project completion: Concrete paving the westbound main lane east of Erby Campbell. Constructing the sound wall on the eastbound main lane ramp.

Other items of significance: None

FM 551 Interchange

CSJ:	0009-12-078	Schematic Approval:	August 22, 2012
Limits (From):	FM 551 at IH 30	IAJ Approval:	August 22, 2012
Estimated construction cost:	\$30,862,690	FHWA-CE Approval:	April 15, 2013
Project Description:	Development and construction of the interchange at IH 30 and FM 551	100% Plans:	April 2013
		ROW Acquisition Began:	August 2013
Commissioner:	David Magness, Precinct 4	ROW Acquisition Complete:	January 2014
		Utility Relocations Began:	December 2013
Firm:	Parsons	Utility Relocations Complete:	July 2015
Key Firm Contact:	Kara Huffman, Ryan Lagsding	Let Date:	July 10, 2013
TxDOT Contact:	Brenda Callaway, Juan Paredes	Construction Start:	June 10, 2014
Funding:	Proposition 12	Construction Completion:	July 2016

Current Status:

- **PS&E:** A final mylar submittal was made to TxDOT on April 9, 2013.
- **Funding:** An AFA with TxDOT for \$5 million for Rockwall County's participation in the project was executed by Rockwall County Commissioners Court on July 12, 2013.
- **Other:** During the week of July 13, 2015, the City of Fate submitted for TxDOT review traffic signal requests for the frontage roads of FM 551. TxDOT will perform a signal study once the FM 551 connection under IH 30 is completed.
- **Construction:** The project was bid on July 10, 2013, with a 180-day delayed start for right-of-way acquisition and utility relocation. The project was awarded to Webber, LLC at a cost of \$30,862,690. Construction began on June 10, 2014. **See attached construction report.** Demolition of FM 551 bridge occurred on September 11, 2015. Access under IH 30 on FM 551 was reestablished on partial temporary and permanent paving on November 25, 2015.

TxDOT Monthly Project Report for the Rockwall Consortium

Date of report: June 21, 2016

Report prepared by: Juan A. Paredes, P.E.

Project: **C 9-12-78**

CSJ: **0009-12-078**

Highway: **IH 30**

Limits: **At FM 551**

Contractor: **Webber, LLC**

TxDOT Project Engineer: Juan A. Paredes, P.E.

TxDOT Project Manager: Porfirio Lopez, Jr.

Phone: (972) 962-3617

Contractor's Superintendent: Jason Eiland

Date Work Began: June 10, 2014

Anticipated Completion Date: July 2016

Current (June) activities: Started and finish construction on the pylons for the new bridge. Finish grading slopes for top soil, seeding, and sod. Complete placing sidewalk and pedestrian ramps throughout project. Finish painting the bridge, columns, and MSE walls. Complete installing small signs and large signs on the project. Complete installing illumination throughout the project. Complete grading around on Culvert RW-6. Started working on preliminary punch list items.

Narrative description of last month's (May) activities: Continued grading slopes for top soil, seeding, and sod. Continued placing sidewalk and pedestrian ramps throughout project. Painted the bridge, columns, and MSE walls. Placed barrier on the eastbound main lane for final configuration. Switched traffic on eastbound main lane to final configuration. Continued installing small signs and large signs on the project. Continued installing illumination throughout the project.

Narrative description of activities planned for next month (July): Finish items on punch list.

Traffic issues: N/A

Plans for changes in traffic patterns: None

Item(s) of work currently controlling project completion: Finish construction of the pylons for the bridge.

Other items of significance: None

FM 3549 Interchange

CSJ:	0009-12-072	Schematic Approval:	February 2012
Limits:	FM 3549 at IH 30	IAJ Approval:	February 2012
Construction Cost:	\$32,822,301	100% Plans:	June 2014
Project Description:	Development and construction of an interchange at IH 30 and FM 3549	Environmental Clearance:	March 19, 2013
		ROW Acquisition Begins:	January 2014
Commissioner:	Cliff Sevier, Precinct 1	ROW Acquisition Complete:	December 2014
Firm:	CP&Y	Utility Relocations Begin:	September 2014
Key Firm Contact:	Robin Handel	Utility Relocations Complete:	October 2016
TxDOT Contact:	Brenda Callaway, Juan Paredes	DCIS Let Date:	February 9, 2016
Funding:	Pass-through financing	Construction Duration:	24 months

Current Status:

- **ROW:** All right of way in possession on December 22, 2014.
- **UTILITY RELOCATION:** Conflict analysis underway due to utilities discovered during a locate request.
 - AT&T:** Clear.
 - Farmers Electric Co-op:** Clear
 - Oncor:** Facilities along IH 30 and FM 3549/Corporate Crossing and aerial crossing of IH 30 east of FM 3549 will need to be relocated. Oncor relocations were underway but have experienced delays due to weather. A meeting between TxDOT and Oncor was held on May 25, 2016, to discuss delays and scheduling. **Oncor estimates completion in August 2016.**
 - AT&T Legacy:** Clear
 - Sprint:** Clear
 - Suddenlink:** Facilities along IH 30 on Oncor poles. Suddenlink will relocate underground instead of relocating on Oncor's poles. Revisions are being made to their plans and estimate. **Agreement is approved, and Suddenlink is ready to proceed with moving their lines underground once Oncor is complete. Suddenlink estimates completion in October 2016.**
- **PS&E:** Received approval to let project under TxDOT 2004 specifications.
- **Construction:** Project was re-let on February 9, 2016. Low bidder was Sema Construction, with a low bid of \$32,882,301.00. There are 600 working days and 24 months of barricades.
- **Funding:** Project selected for pass-through financing. The PTF agreement was executed on May 10, 2013, and the initial payment of \$4,418,000.00 was made by Rockwall County on June 25, 2013. Payment of \$22,037,679.37 was transmitted to TxDOT in September 2014. Payment of \$2,697,499.67 was approved on February 25, 2015. **Payment of \$4,372,697.99 on commissioners court agenda for consideration on June 28, 2016.**

FM 3549 (North)

CSJ:	1015-01-023	Schematic Approval:	December 3, 2015
Limits:	IH 30 to SH 66	Environmental Approval:	March 8, 2016
Estimated construction cost:	\$9,279,943	100% Plans to Austin:	Fall 2016
Project Description:	Widen existing 2-lane rural facility to a 4-lane urban roadway	ROW Acquisition Began:	February 2016
Commissioner:	Cliff Sevier, Precinct 1	ROW Acquisition Complete:	Spring 2017
Firm:	Atkins	Utility Relocations Begin:	Spring 2017
Key Firm Contact:	Thomas Le	Utility Relocations Complete:	Late 2017
TxDOT Contact:	Nancy Peron, Charles May	Anticipated Project Let Date:	January 2017
Funding:	Proposition 1	DCIS Let Date:	August 2018

Current Activities:

- **Schematic:** Schematic was approved on December 3, 2015.
- **ENV:** FONSI received on March 8, 2016.
- **DGNO Railroad Exhibit A:** Atkins completed and submitted the railroad scope of work to TxDOT on April 10, 2015, for TxDOT to coordinate with DGNO Railroad. TxDOT provided Exhibit A review comments on April 16, 2015. TxDOT submitted RR Exhibit A to DGNO RR on April 28, 2016.
- **PS&E:** The 60% plans were submitted to TxDOT on May 29, 2015. Signed and sealed Pavement Design Report submitted to TxDOT Dallas District. Received TxDOT's 60% plan review comments on March 10, 2016. Preparing 90% plans to incorporate 60% plan review comments. Atkins is adding median cuts at locations discussed in meeting with TxDOT, City of Rockwall, and City of Fate.
- **ROW:** Final ROW maps, parcel descriptions, and ROW electronic files were submitted to TxDOT on September 16, 2015, for review. TxDOT ROW map review comments were received on November 2, 2015, and November 18, 2015. Awaiting additional SUE information from TxDOT to reduce the proposed ROW within the existing NTMWD 50' easement. Atkins is proceeding with ROW map revisions prior to TxDOT providing additional SUE information. **Total number of parcels is 39; 4 in process of being appraised; 35 in negotiations or pending close.**
- **Utility Coordination:** A Level B SUE is available. A meeting was held on March 22, 2016, to determine where additional SUE information is required to develop a Level A SUE. **Level A SUE will be ready by June 24, 2016.**

FM 740 South

CSJ:	1014-03-049 & 1091-04-023	Schematic Approval:	May 2012
Limits (From):	FM 1140 North	CE Approval:	November 2012
(To):	FM 1140 South	100% Plans Submission to Austin:	May 2013
Estimated construction cost:	\$12,967,453	ROW Acquisition Begins:	November 2012
Project Description:	Widen existing 2-lane facility to a 4-lane divided urban roadway	ROW Acquisition Complete:	August 2014
Commissioner:	Lee Gilbert, Precinct 2	Utility Relocations Begin:	June 2014
Firm:	Lochner	Utility Relocations Complete:	April 2016
Key Firm Contact:	Greg Delgado	Project Let:	August 6, 2013
TxDOT Contact:	Brenda Callaway/Juan Paredes	Construction Start Date:	July 20, 2015
Funding:	Proposition 12	Anticipated Project Completion:	August 2017

Current Activities:

- **ROW:** All parcels are in possession.
- **Utility Coordination:** Relocations are complete.
- **PS&E:** Plans were submitted to TxDOT on April 1, 2013.
- **Construction:** Project let on August 6, 2013. Contract was awarded to Ed Bell Company for a low bid of \$12,967,453.00. There was a 270-day delayed start in the construction contract to allow for right-of-way acquisition and utility adjustments. Contractor began work on July 20, 2015. **See attached construction report.**

TxDOT Monthly Project Report for the Rockwall Consortium

Date of report: June 21, 2016

Report prepared by: Juan A. Paredes, P.E.

Project: **C 1014-3-49**

CSJ: **1014-03-049, etc.**

Highway: **FM 740**

Limits: **From FM 1140 North to FM 1140 South**

Contractor: **Ed Bell Construction Co.**

TxDOT Project Engineer: Juan A. Paredes, P.E.

TxDOT Project Manager: Adam Clements

Phone: (972) 962-3617

Contractor's Superintendent: Karl Butler

Date Work Began: July 20, 2015

Anticipated Completion Date: August 2017

Current (June) activities: Placed storm sewer pipe and inlets for Line H-19, Line N-2, Line N-1. Placed bottom of inlets on Line F-4, Line D-8, M-1, and L-13. Started the removal of the old concrete slab on FM 740. Removed old abandoned gas tanks at the intersection of FM 740 and FM 1140. Begin grading for the detour at the intersection of FM 740 and FM 1140. Place detour at the intersection of FM 740 and FM 1140 to switch traffic to Phase 2. Started roadway excavation north of FM 550. Atmos gas relocating line in conflict in front of the Shell gas station.

Narrative description of last month's (May) activities: Completed placing storm sewer pipe and inlets for Line F, Line D, and Line L-10. Completed lateral lines M-11 and H-20. Completed removing the asbestos pipe on project.

Narrative description of activities planned for next month (July): Continue placing storm sewer pipe and inlets for Phase 2. Complete detour at the intersection of FM 740 and FM 1140 to switch traffic to Phase 2. Place low profile concrete barriers for Phase 2 of construction and switch traffic to Phase 2 of construction. Remove existing roadway from FM 550 to FM 1140. Continue roadway excavation north of FM 550. Construct the MSE Wall B for culvert #1.

Traffic issues: None

Plans for changes in traffic patterns: Switch traffic to Phase 2 from FM 550 to FM 1140 in late June/early July, depending on progress of work due to weather.

Item(s) of work currently controlling project completion: Completing detour at the intersection of FM 740 and FM 1140.

Other items of significance: None

FM 552

CSJ:	1017-01-015	Schematic Approval (District):	*
Limits:	SH 205 to SH 66	FHWA-CE Approval:	*
Estimated construction cost:	\$46 million	100% Plans to Austin:	*
Project Description:	Widen existing 2-lane facility to a 4-lane divided urban roadway	ROW/Utility Relocations Begin:	*
Commissioner:	Cliff Sevier, Precinct 1	ROW/Utility Relocations Complete:	*
TxDOT Project Manager:	Nancy Peron	Anticipated Project Let Date:	*
Firm:	HNTB	DCIS:	*
Key Contact:	Dan Chapman	Construction Complete:	*

Current Activities:

- **ENV:** HNTB has completed initial environmental data collection and submitted a Draft Environmental Constraints Map to TxDOT Dallas for review. The Public Meeting was held on April 10, 2014. HNTB submitted comment responses to TxDOT on May 27, 2014. HNTB submitted revised Public Meeting Summary to TxDOT District and ITS on November 19, 2014.
- **Schematic:** HNTB submitted the revised hydraulic report and schematic to TxDOT District Office on October 3, 2013. HNTB received additional comments on the hydraulic report from TxDOT District Office on October 10, 2013, and revised the hydraulic models and provided clarification on October 10, 2013.
- On April 2, 2014, TxDOT, HNTB, ITS, and Halff Associates met with Lavon Special Utility District representatives to present alternative configurations for the FM 552 and SH 66 interchange to minimize impacts to proposed pump station improvements by LSUD near the interchange.
- HNTB is currently developing a scope for the updated schematic and environmental documents for the 4-lane arterial section and plan to submit a draft by mid-December 2015.
- **ROW:** HNTB has submitted to the county a current ROE status map graphically documenting ROE letter responses along the corridor.
- **Utility Coordination:** Pending the development of a ROW Map and 65 Percent Plans Adequate.
- **Other:** AFA was executed by Rockwall County Commissioners Court on Tuesday, May 8, 2012. The AFA was executed by TxDOT on June 12, 2012.
- ITS submitted a TIP modification in the October 2015 cycle to reduce the number of lanes planned from six to four.
- HNTB is working on a supplemental agreement to the contract to revise the schematic to a four-lane arterial to match the revisions of FM 552 on the thoroughfare plan. The supplemental agreement has been drafted and is under internal review. HNTB plans to submit to ITS for review before the end of June.

SH 276

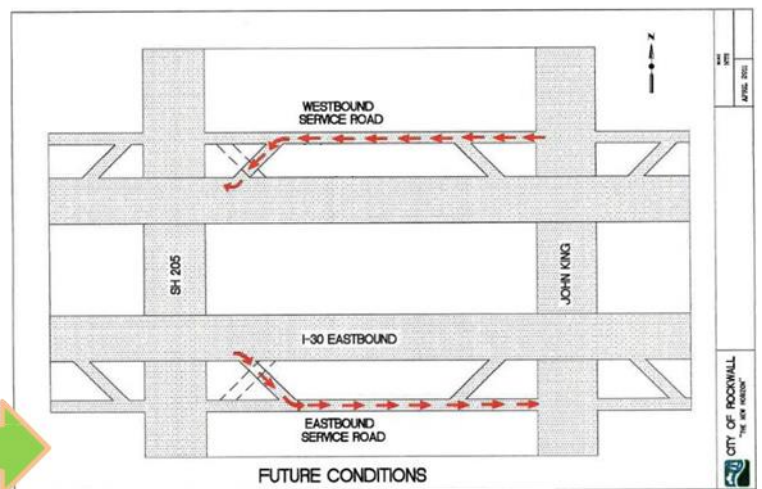
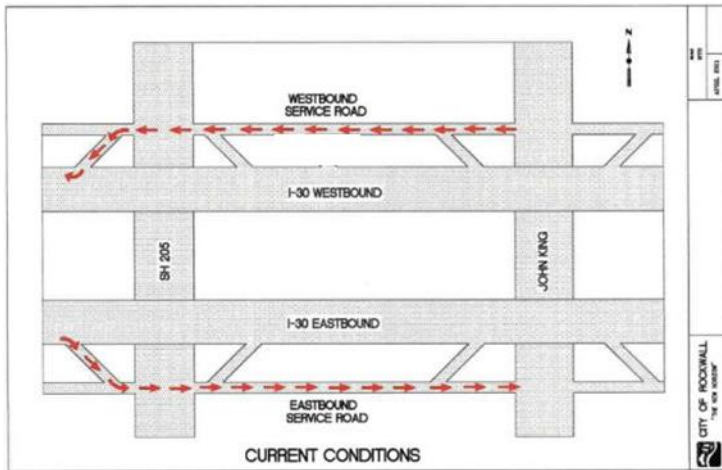
CSJ:	1290-02-017	Schematic Approval:	July 9, 2015
Limits:	SH 205 to FM 549	Environmental Clearance:	February 24, 2016
Estimated construction cost:	\$17,268, 421	100% Plans to Austin:	June 2017
Project Description:	Widen existing 2-lane facility to a 4-lane divided urban roadway	ROW Acquisition Began:	January 2016
		ROW Acquisition Complete:	May 2017
Commissioner:	Dennis Bailey, Precinct 3	Utility Relocations Begin:	April 2017
Firm:	CH2MHill	Utility Relocations Complete:	September 2017
Key Contact:	Will Barresi/Brian Clark	Anticipated Project Let Date:	September 2017
TxDOT Contact:	Ali Taheri	DCIS Let Date:	July 2018
Funding:	Proposition 1	Construction Complete:	*

Current Activities:

- **Schematic:** Schematic was approved by the District on July 9, 2015.
- **Environmental:** FONSI received on February 24, 2016. Noise wall workshop was held on May 4, 2016. CH2MHill submitted a noise wall workshop summary to TxDOT on June 3, 2016. CH2MHill revised noise wall plans so that minimum wall height was met.
- **PS&E:** A preliminary 100% plan set was submitted on November 26, 2015. The final PS&E will need to be submitted three months before contract letting. CH2MHill attended meeting with TxDOT on February 22, 2016, to discuss storm water treatment unit changes. Submitted proposed design changes to the storm sewer system and the storm water treatment units to TxDOT for consideration before revising the plans. Coordinated with Dannenbaum on the FM 549 project and adjusted pavement accordingly. Submitted proposed design changes to the storm sewer system and the Storm Water Treatment Units (SWTU) to TxDOT for consideration in March. TxDOT is considering appropriate method of treatment on district-wide basis. CH2MHill will update plans accordingly based on TxDOT's direction.
- **ROW:** ROW map is approved. There are 33 parcels for acquisition; 4 parcels have been closed; 10 parcels in closing; 11 parcels in negotiation; 8 parcels are in ED.
- **Utility Coordination:** Plans Adequate for utility relocation were sent to utility companies on February 9, 2015. CH2MHill began working with ITS to add utility conflict analysis and utility coordination services for Level A SUE. Dallas District Utility Coordinator began monthly meetings with CH2MHill to determine actual conflicts. CH2MHill continued utility conflict analysis. Supplemental Agreement with CH2MHill to include utility conflict analysis was approved by commissioners court on April 26, 2016. Schematic for Level A SUE is complete. District Survey commissioned a consultant for the field work, which should be completed in August 2016. Atmos and City of Rockwall have performed their own Level A analysis and have submitted information to TxDOT to supplement CH2MHill's conflict analysis above. Pending CH2MHill's Level A SUE results, Atmos will proceed accordingly. City of Rockwall has concluded that conflicts exist with their facilities and have proceeded to design relocation plans ahead of the Level A SUE results. Pending CH2MHill's Level A SUE, TxDOT and the City of Heath are still working to determine if City of Heath's facilities are in conflict.

IH 30 Ramp Reversal Project

CSJ:	0009-12-214	Schematic Approval:	March 10, 2016
Limits:	From SH 205 to John King	CE Approval:	March 10, 2016
Construction Cost:	\$3,485,857	100% Plans to Austin:	January 11, 2016
Project Description:	The proposed project will replace existing westbound exit ramp from IH 30 with an entrance ramp and replace the existing eastbound entrance ramp east of SH 205 with an exit ramp	ROW/Utility Relocations Begin:	NA
		ROW/Utility Relocations Complete:	NA
Commissioner:	Lee Gilbert, Precinct 2	Project Let Date:	April 6, 2016
Firm:	HDR	Construction Start:	July 2016
Key Contact:	Phil Ullman	Construction Complete:	December 2016



Current Activity:

- **Schematic:** IAJ approved March 10, 2016. Schematic approved on March 10, 2016.
- **Environmental:** Project cleared on March 10, 2016.
- **PS&E:** The 100% PS&E submitted on January 11, 2016.
- **Funding:** ICA Amendment #1 approved by Rockwall County Commissioners Court on April 12, 2016. AFA Amendment #1 with TxDOT approved by Rockwall County Commissioners Court on April 12, 2016. Payment of \$2,535,857.41 is on commissioners court agenda for consideration on June 28, 2016.
- **Construction:** Project let on April 6, 2016. The low bidder was Ed Bell Construction with a low bid of \$3,485,857.41, 18.56% over the estimate. There are 155 working days and 6 months of barricades. Pre-construction meeting was held at the Kaufman-Rockwall Area Office on June 15, 2016.

Regional Transportation Council Updates

Current Activity:

- There were no items to discuss from the June RTC meeting.

SH 66 Interim Project

CSJ:	0009-04-061; -065	Schematic Approval:	November 2015
Limits:	From SH 205 to county line	Environmental Clearance:	November 2015
Construction Cost:	\$15,872,363	100% Plans:	January 2016
Project Description:	Rehabilitate existing 2-lane facility, widen shoulders, and add turn lanes at various intersections	ROW Acquisition Began:	April 2016
Commissioner:	David Magness, Precinct 4	ROW Acquisition Complete:	July 2016
Firm:	Halff	Utility Relocations Complete:	February 2017
Key Firm Contact:	Mike Romanowski, Chad Gardiner	Let Date:	March 2, 2016
TxDOT Contact:	Nancy Peron	Construction Complete:	Summer 2018

Current Activities:

- For interim project, the County will develop environmental document for intersection improvements, and TxDOT will focus on the pavement rehab and shoulder widening. TxDOT will fund PS&E development of all improvements. TxDOT will let improvements and oversee construction.
- **Environmental:** TxDOT Dallas District environmentally cleared the intersection improvements for CSJ 0009-04-065 on November 20, 2015. TxDOT Dallas District environmentally cleared the pavement improvements for CSJ 0009-04-061 on January 12, 2016.
- **PS&E:** Halff submitted 100% PS&E plans on January 5, 2016.
- **Utilities:** Utilities in conflict include AT&T, Connexions Telcom, North Texas Municipal Water District, Charter Communications, Oncor Electric Delivery, Farmers Electric, and City of Fate. Anticipate no effect on construction.
 - **City of Fate:** Utility conflicts at driveways, concrete rip rap and ditch grading. Relocation permit was approved on May 25, 2016. Estimated completion date is August 2016. **Start date is pending.**
 - **AT&T:** Utility conflicts at driveways, concrete rip rap and ditch grading. Estimated completion date is September 1, 2016. Also conflict in areas where right turn lanes are proposed. Estimated clearance date is February 1, 2017. **Relocation plans in TxDOT review prior to formal submission.**
 - **NTMWD:** Conflict at culvert 5, Dismore, and FM 552. Estimated clearance date is December 31, 2016. **Working on relocation plans.**
- **ROW:** The updated ROW map was submitted to TxDOT Dallas District on December 9, 2015. ROW LPA with TxDOT was approved by commissioners court on April 26, 2016. **One parcel in negotiation.**
- **Construction:** The project let on March 2, 2016. The apparent low bidder is APAC with a low bid of \$15,872,363.00. There are 505 working days and 24 months of barricades.
- **Other:** AFA with TxDOT was approved by commissioners court on April 26, 2016. **Payments for construction and ROW were transmitted to TxDOT on June 14, 2016. Traffic signal is warranted at SH 66 and Erby Campbell but will not be authorized for installation until the turn lanes on this project are constructed.**

SH 66 Ultimate Project

CSJ:	0009-04-060; 0009-04-064; 0009-05-012	Public Meeting:	February 28, 2013
Limits:	SH 205 to county line	Schematic Approval:	*
Estimated construction cost:	\$95.7 million	Environmental Clearance:	*
Project Description:	Widen existing 2-lane facility to a 4-lane divided urban roadway	ROW Acquisition Begins:	*
Commissioner:	David Magness, Precinct 4	ROW Acquisition Complete:	*
Firm:	Halff	Utility Relocations Complete:	*
Key Firm Contact:	Mike Romanowski, Chad Gardiner	Let Date:	*
TxDOT Contact:	Nancy Peron	Construction Complete:	*

Current Activities:

- On March 26, 2013, Royse City Council passed a resolution calling for the county to reconsider the Texas 66 couplet alignment incorporating Church Street as the westbound lanes of SH 66. Royse City mayor will be providing a letter to Rockwall County Commissioners Court requesting that SH 66 proposed improvements end at Erby Campbell Boulevard. At this time, the city is unable to secure support for a preferred alignment between Erby Campbell and FM 1777. Halff updated the February 28, 2013, Public Meeting Summary and Analysis document to incorporate feedback from Royse City and submitted the revised document to TxDOT on May 21, 2013.
- Halff coordinated with Atkins and TxDOT regarding the design of the SH 66/FM 3549 intersection.
- **ENV:** Halff has completed field surveys and preliminary data reports to determine potentially historic properties along SH 66. A public meeting was held on February 28, 2013. Efforts related to the final development of the EA document are on hold until further notice.
- **Schematic:** Halff verified that the proposed FM 3549 improvements are facilitated by the SH 66 proposed improvements.
- ITS met with Royse City regarding SH 66 Ultimate. City has requested extending limits of EA to FM 1777.
- Halff reviewed the draft NCTCOG 2040 MTP update and provided comments to TxDOT regarding the ultimate plan for SH 66.
- Halff coordinated with TxDOT regarding railroad agreements required for the ultimate and interim projects. Provided TxDOT with summary of ultimate improvements included in the 2040 MTP updates and updated Rockwall County Thoroughfare Plan. Provided ITS with alternatives analysis exhibits developed for the ultimate project.

FM 549 (South)

CSJ:	1015-01-024	Schematic Approval:	February 2017
Limits:	SH 276 to SH 205	FHWA-CE Approval:	*
Estimated construction cost:	\$17,859,194	100% Plans to Austin:	May 2018
Project Description:	Widen existing 2-lane rural facility to a 4-lane urban roadway	ROW Acquisitions Begin:	*
		ROW Acquisition Complete:	*
Commissioner:	Dennis Bailey, Precinct 3	Utility Relocations Begin:	*
Firm:	Dannenbaum	Utility Relocations Complete:	*
Key Firm Contact:	Danny Everett	Anticipated Project Let Date:	*
TxDOT Contact:	Nancy Peron	DCIS:	*

Current Activities:

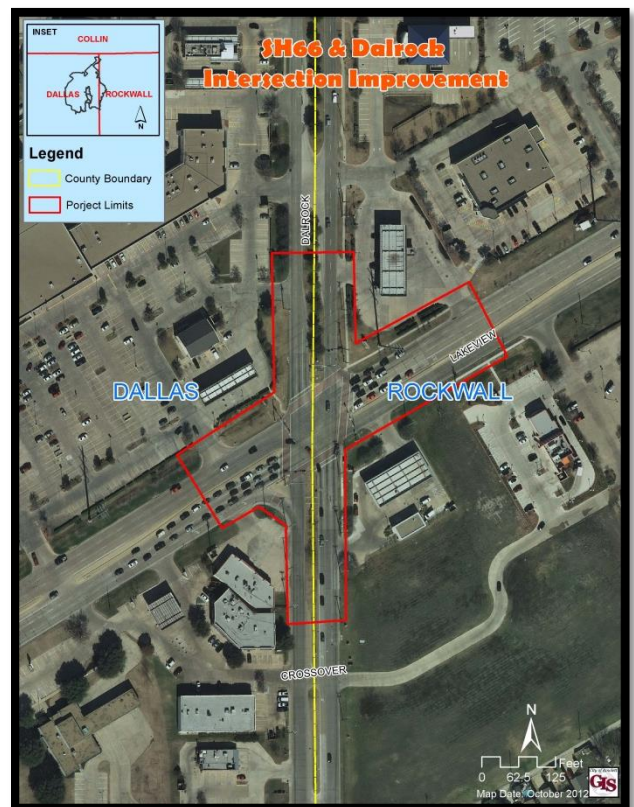
- **Schematic:** Dannenbaum submitted updated schematic, hydraulic report, and environmental constraints report to TxDOT on October 24, 2014. TxDOT sent additional hydraulic comments to Dannenbaum on January 27, 2015.
- City of Rockwall requested that the cross drainage culverts be upsized to convey a 100-year design storm. Dannenbaum upsized all of the cross drainage structures to a 100-year storm. The Rockwall City Council approved the city paying for the estimated increase in cost for the upsizing.
- Dannenbaum submitted the electronic copy of schematic to TxDOT and addressed comments. Dannenbaum received TxDOT Dallas District comments on November 13, 2015.
- Dannenbaum is realigning north end of project at SH 276 and coordinating project with CH2MHill.
- Dannenbaum submitted a supplemental to reduce the design to four lanes to conform to the new thoroughfare plan. **Dannenbaum and ITS are negotiating on the scope and fee of the supplemental agreement.** Dannenbaum began realignment of corridor to 4-lane roadway resulting in a reduction of width of ROW as well. **Dannenbaum is continuing design of new 4-lane facility, establishing new ROW for the corridor, and continuing design and updates of schematic.** Redesign will reduce impacts to adjacent property owners.
- **ENV:** Revised environmental constraints report was submitted to TxDOT on May 20, 2015, for final approval. Public meeting was held on December 10, 2015, at the Rockwall County Courthouse. Dannenbaum submitted the Public Meeting Summary on February 23, 2016.
- **PS&E:** Will be responsible for providing the PS&E once the schematic has been approved.
- **ROW:** Pending Environmental Clearance and the development of the ROW Map.
- **Utility Coordination:** Pending the development of a ROW Map and 65 Percent Plans Adequate.
- **Other:** ITS submitted a TIP modification in the January 2016 cycle to reduce the number of lanes planned from six to four.

SH 66 and Dalrock Intersection Improvements

Limits:	At Dalrock Road	Environmental Clearance:	*
Estimated construction cost:	\$1,092,405	100% Plans:	*
Project Description:	Improve existing intersection to urban intersection with additional left-turn and right-turn lanes	ROW Acquisitions Begin:	*
		ROW Acquisition Complete:	*
Commissioner:	Lee Gilbert, Precinct 2	Utility Relocations Begin:	*
Firm:	Rowlett, Walter Allison/ Lee Engineering, Kelly Parma	Utility Relocations Complete:	*
TxDOT Project Manager:	Ali Taheri	Anticipated Project Let Date:	*

Current Activity:

- Lee Engineering submitted 95% plans for city and TxDOT review on July 9, 2015. TxDOT East Dallas Area Office has completed the review of the plans. TxDOT informed Lee Engineering that if any state or federal funding is used for the project, then additional TxDOT reviews would be required.
- Lee Engineering received comments from TxDOT and is working to incorporate those into the design plans. Based on TxDOT's comments, Lee Engineering will also need to obtain schematic and environmental clearance on the project before the next submittal.
- The project is on hold until the funding is finalized and a bid date is set.
- Lee Engineering is working to produce ROW acquisition documents and is beginning coordination with franchise utilities in the area.
- Lee Engineering and the City of Rowlett met with TxDOT on November 30, 2015, to discuss their comments and to move the project forward. Lee Engineering provided to the city a revised scope to address the federal funding component of the project. Awaiting approval of scope before addressing and incorporating TxDOT comments. **Rowlett City Council will be considering the revised scope on July 5, 2016.**



SH 205

CSJ:	0451-03-013; 0451-02-028; 0451-01-053; 0451-04-021	Schematic Approval:	January 2017
Limits:	US 80 to SH 78	Environmental Approval:	June 2017
Estimated construction cost:	\$200 million	100% Plans to Austin:	*
Project Description:	Widen from 2-lane rural to 4-lane urban divided with allowance for ultimate 6 lanes	ROW Acquisitions Begin:	*
		ROW Acquisition Complete:	*
Firm:	Halff	Utility Relocations Begin:	*
Key Firm Contact:	Matt Craig	Utility Relocations Complete:	*
TxDOT Contact:	Nancy Peron	Anticipated Project Let Date:	*

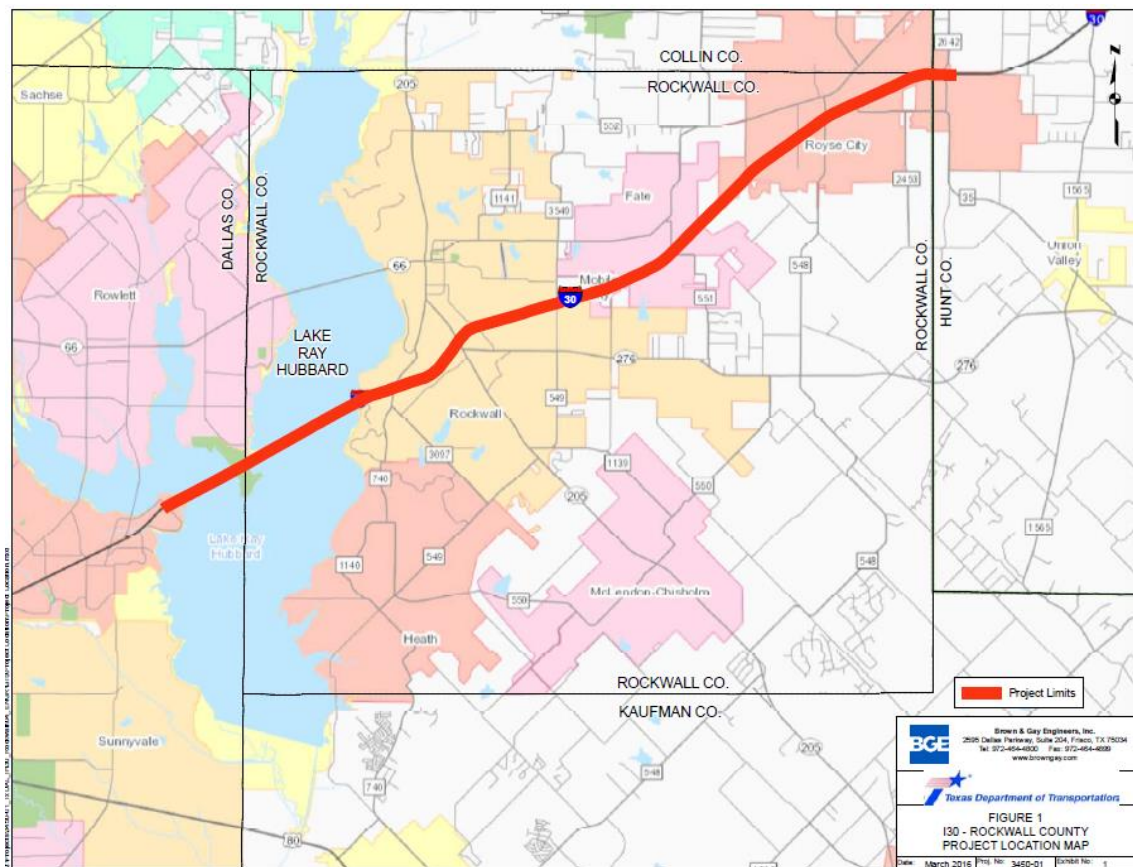
Current Activity:

- **Schematic:** Halff submitted the 30% schematics for the other segments of the project on October 2, 2015. Halff is continuing to coordinate with TxDOT on the potential John King alternative around the City of Rockwall.
- The project may be split into two projects: north project, from FM 549 to SH 78, and south project, from US 80 to FM 549; but for now, the project will move forward as one project. Halff met with the City of Rockwall on April 6, 2016, to discuss alternatives analysis for the City of Rockwall portion of the project and answered questions. Halff is continuing efforts on the alternatives analysis for the project. Halff submitted to TxDOT a 60% schematic on the southern project.
- Halff anticipates holding public meetings to discuss the project on July 7 and 12, 2016. Meeting on July 7 will be held at Utey Middle School, 1201 TL Townsend Drive, Rockwall. Meeting on July 12 will be held at Terrell High School, 701 Town North Drive, Terrell. Both meetings will provide the same project information to attendees.
- Halff has sent out right-of-entry letters to adjacent property owners on the southern project for purposes of field surveying work associated with design efforts.
- Stakeholder meeting to discuss project held on June 9, 2016.



IH 30 Corridor Study

CSJ:	0009-11-238, 0009-12-215, 0009-13-955; 0009-12-908
Limits:	From Bass Pro to FM 2642
Estimated construction cost:	*
Project Description:	Widen to 6-lane main lanes; construct or reconstruct continuous 4-lane frontage roads; reconstruct ramps and bridge structures and IH 30/FM 2642 interchange
Firm:	Brown & Gay
Key Firm Contact:	Wes McClure
TxDOT Contact:	John Nguyen



Current Activity:

- 1) Project Scope: Ultimate Reconstruction (CSJs: 0009-11-238, 0009-12-215, 0009-13-955)
Project Limit: From Bass Pro to FM 2642
 - Widen to 8-lane eastbound and westbound main lanes from Bass Pro to SH 20 and widen to 6 lanes from SH 205 to FM 2642;
 - Construct/reconstruct continuous 4-lane eastbound and westbound frontage roads within the corridor limit (2 lanes in either direction), including new frontage road bridge structures across Lake Ray Hubbard;

- Reconstruct ramps and bridge structures necessary to accommodate interim improvements with exception to John King, Erby Campbell, FM 3549, and FM 551;
 - Reconstruct interchange of IH 30 at FM 2642;
 - Submitted to NCTCOG for Mobility 2040 Plan.
- 2) Project Scope: Bayside Development at Dalrock (New CSJ: 0009-11-xxx)
Project Limit: East of Dalrock to Dalrock
- Construct new bridge at Bayside Drive; Reconstruct Dalrock Interchange; Reconstruct ramps to Dalrock to serve both Bayside Development and Dalrock
 - Status: BGE currently developing conceptual design. Anticipate next meeting in week of June 27, 2016.
- 3) Independent Project Scope: IH 30 Entrance Ramp between Horizon Drive and FM 740 (CSJ: 0009-12-217)
Project Limits: from Horizon Drive to FM 740
- Construct new westbound entrance ramp.
 - Status: BGE to prepare design schematic and environmental documentation for this project to be let in October 2018.

STATUS OF I-30 ROCKWALL CORRIDOR PROJECT:

- TxDOT hired consultant Brown & Gay in December 2015. SUE plans are being finalized. Topo, aerial, digital terrain, and existing ROW received from LTRA. Brown & Gay has obtained bridge inspection reports and is evaluating existing bridge conditions. TxDOT and ITS will meet for an informal project kick-off meeting and will then coordinate a formal project kick-off meeting with stakeholders.
- TxDOT met with ITS on March 3, 2016, to receive input on project from local perspective.
- TxDOT held environmental preparation kick-off meeting with consultant on March 31, 2016.
- Consultant to begin schematic development and prepare environmental documentation.
- Anticipated schematic submittal to FHWA for review in fall 2016.
- On April 12, 2016, TxDOT met with Dallas Water Utilities to discuss Lake Ray Hubbard and potential project impacts.
- TxDOT and consultant reviewed MTP and conformity for IH 30 entries.
- TxDOT to provide presentation to Rockwall County Consortium regarding project.
- Kick-off meeting with local agencies and local and elected stakeholders held on May 31, 2015, at TxDOT Dallas District.